

Individual sperm whale coda characterization



Pascale Giraudet (PRAG)
Solène Besnehard (Internship)



Context

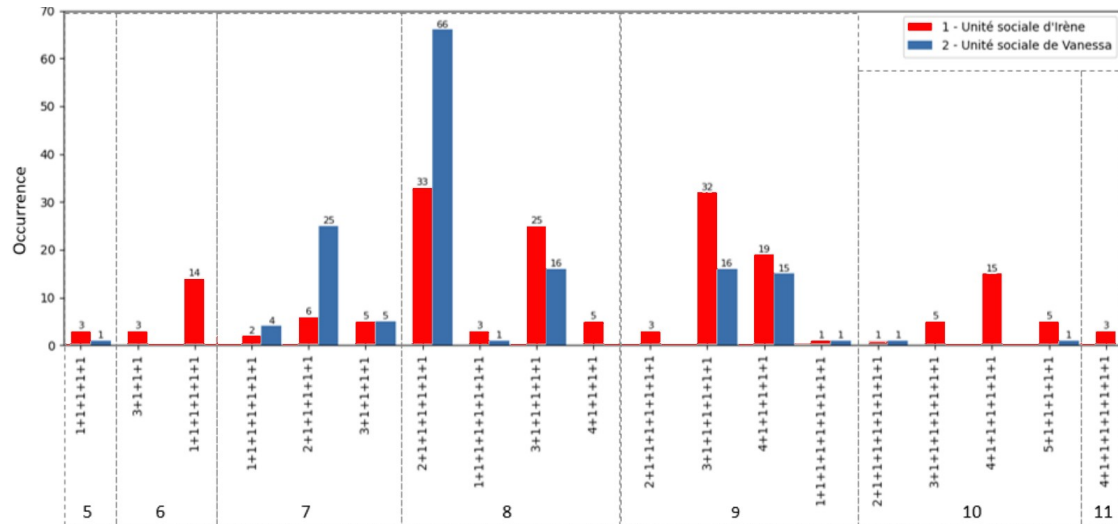
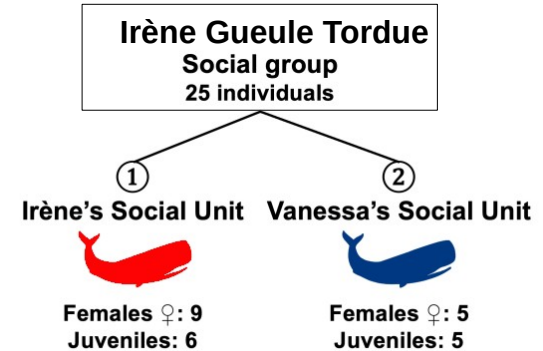
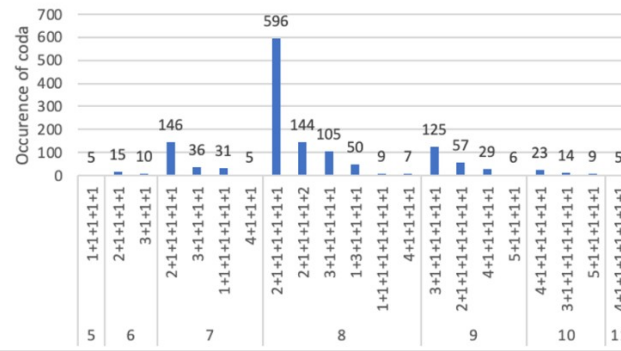
- Irene Gueule Tordue social group of Sperm Whale has been recorded since 2013

- It is known to produce a specific repertoire of coda with a predominance of the 8-click 2+ type

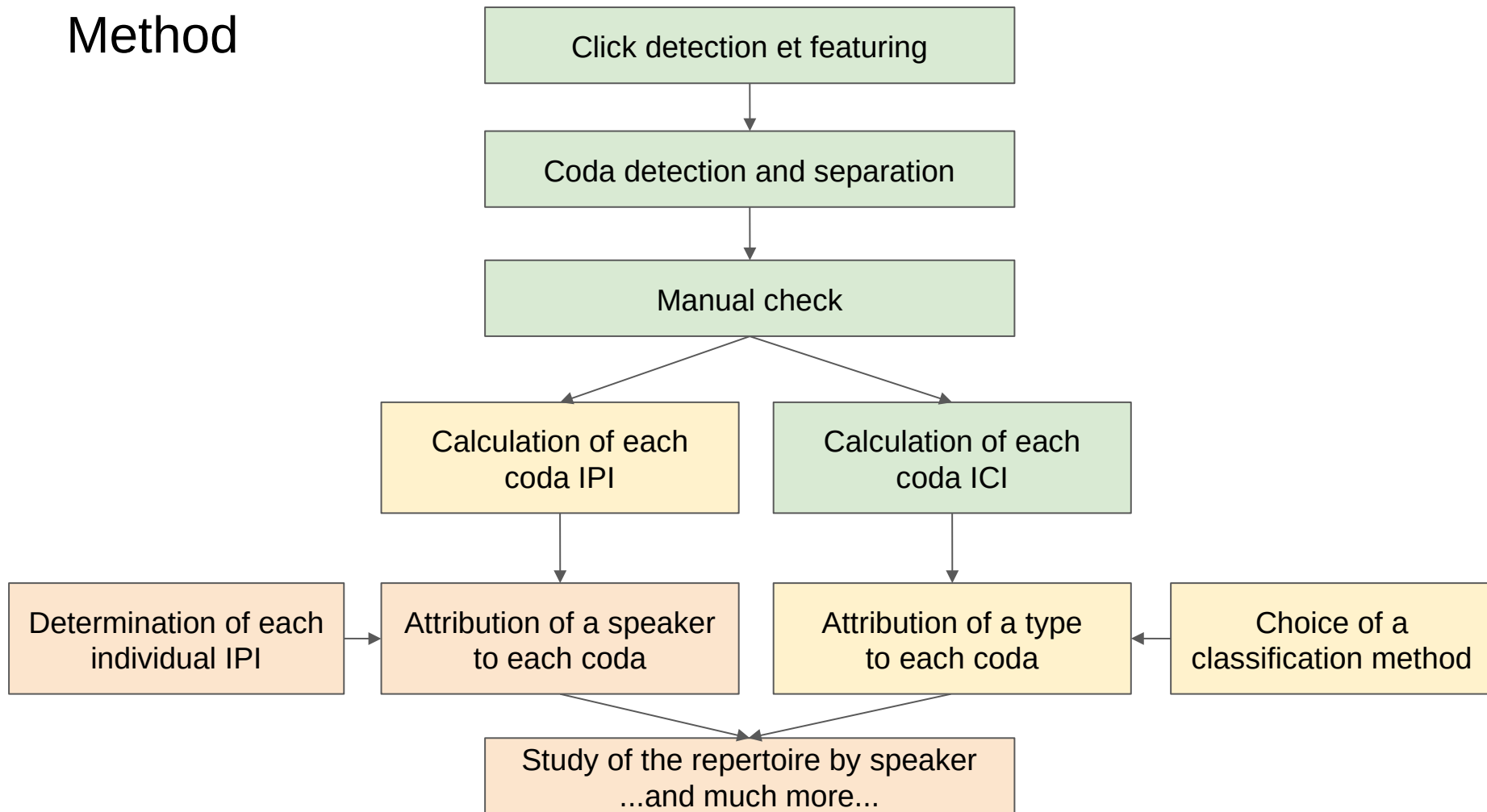
- It gradually split into two social units since 2017

- In 2023, the separation is complete and the repertoires of codas recorded in the 2 subunits are significantly different

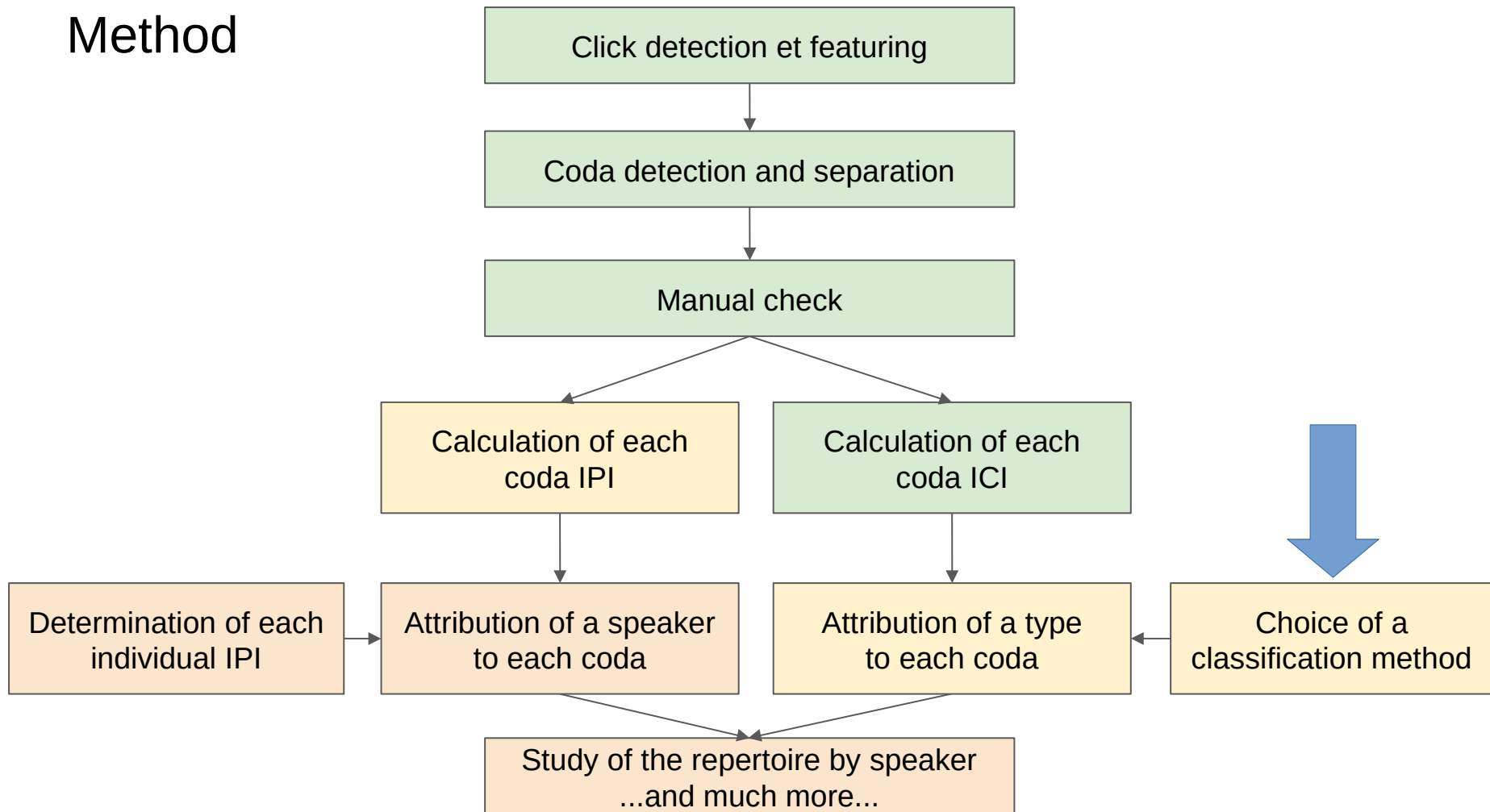
- Is this difference due to different individual repertoires ?



Method



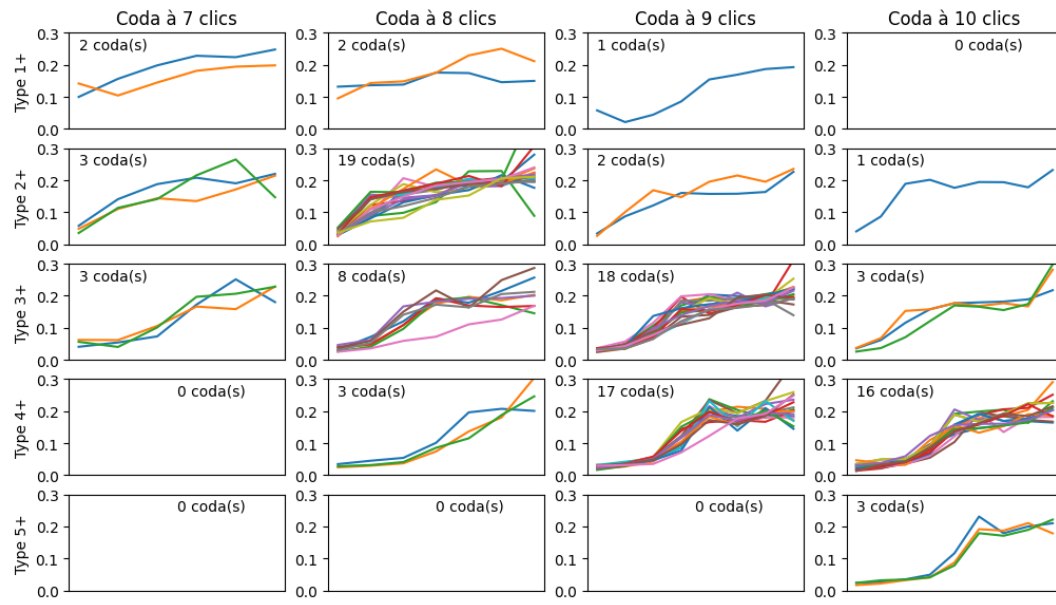
Method



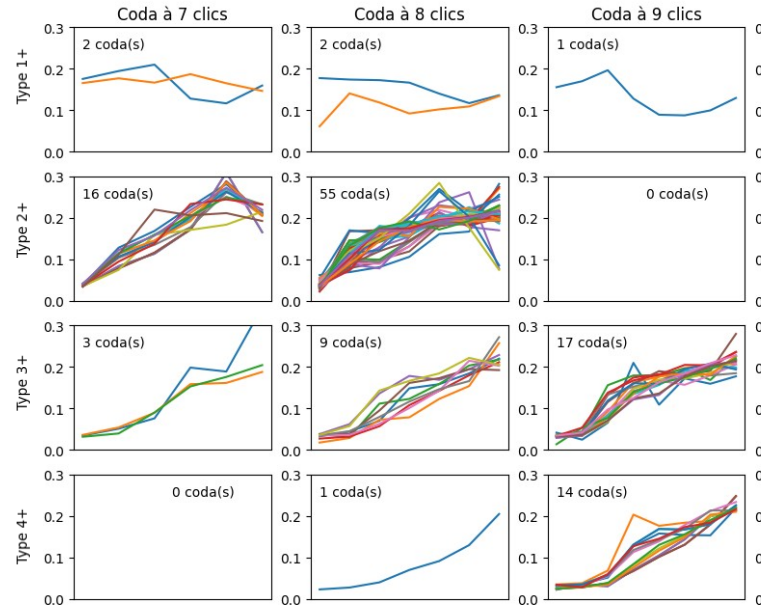
Choice of a coda classification method

- Coda type $n_1+n_2+\dots+n_i$

Irene social unit



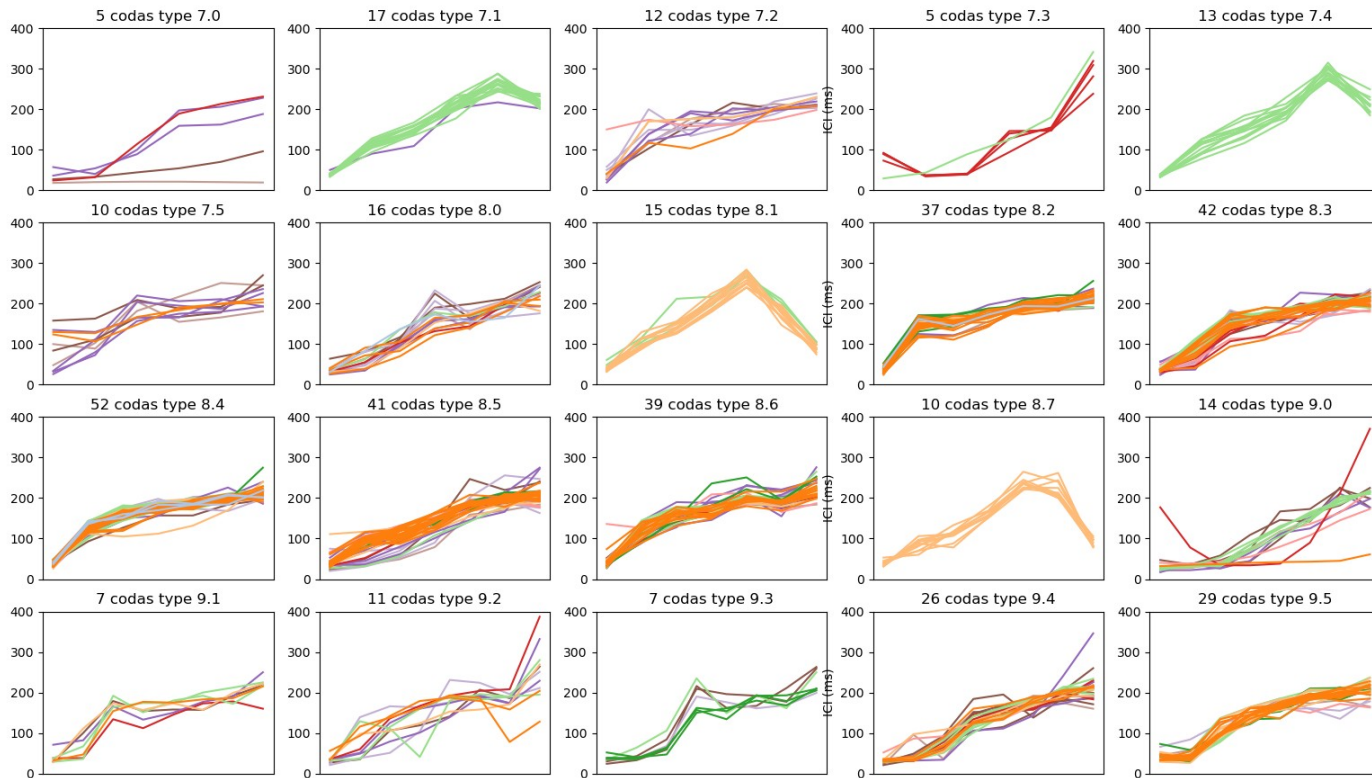
Vanessa social unit



ICI value (s) ↑
ICI number →

Choice of a coda classification method

- k-Means clustering

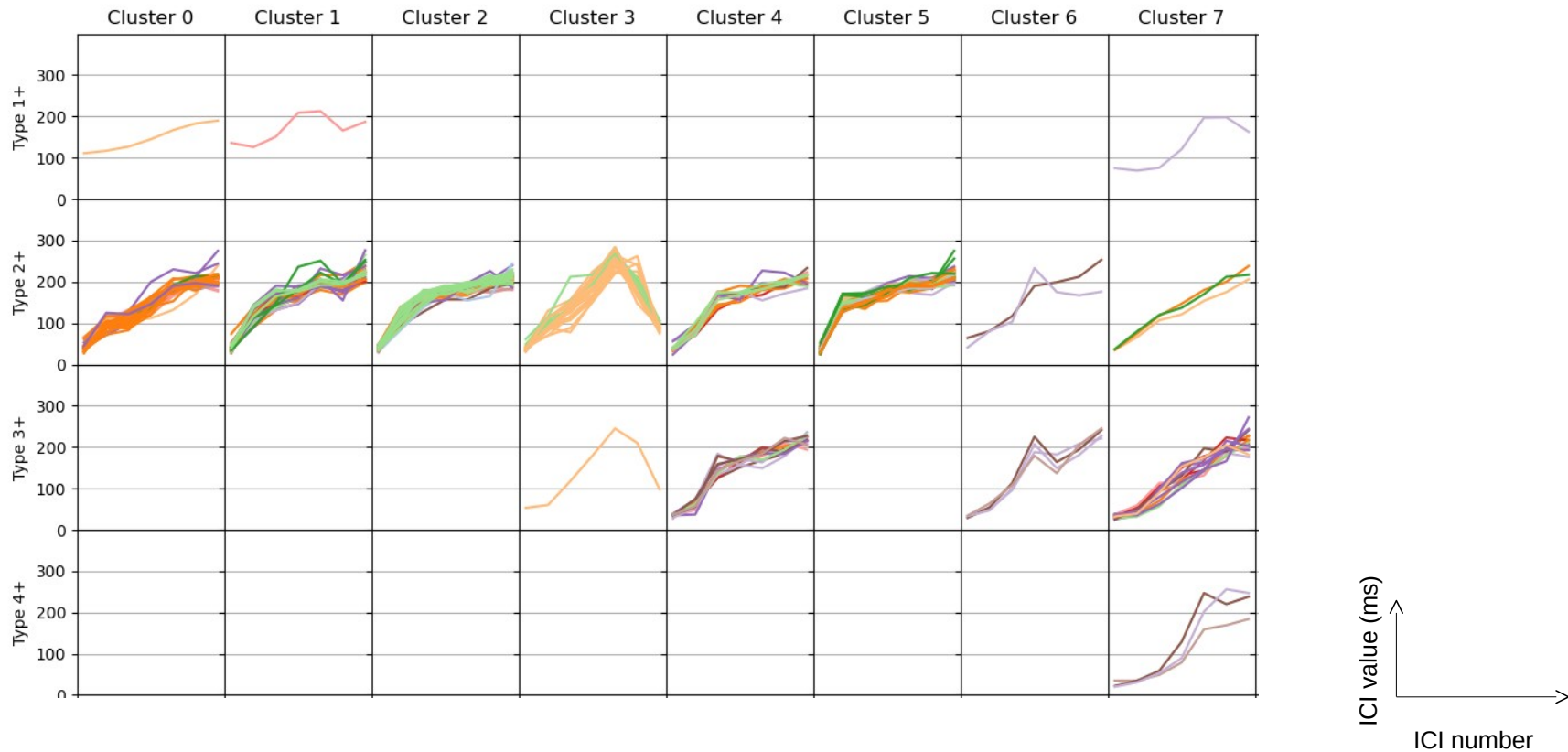


ICI value (ms) ↑
ICI number →

Choice of a coda classification method

- comparison Type versus clustering

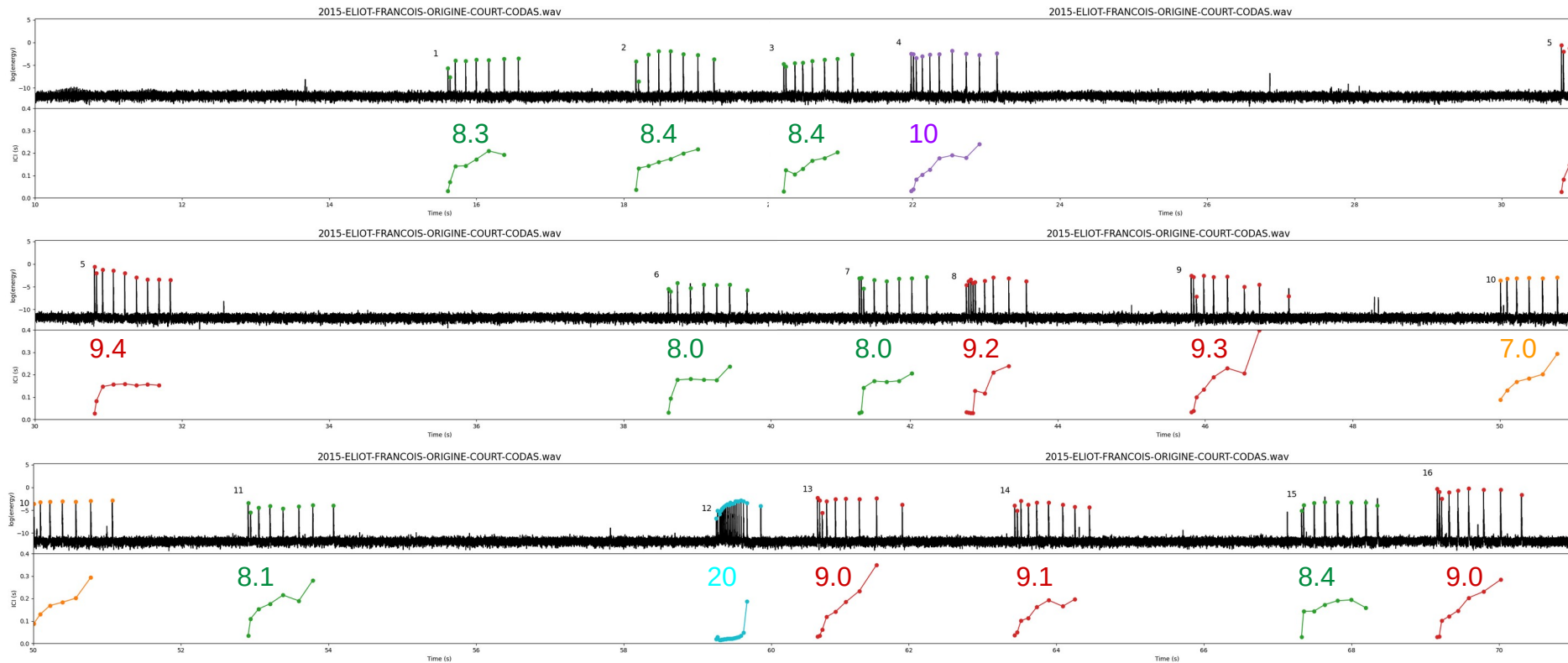
8 clics



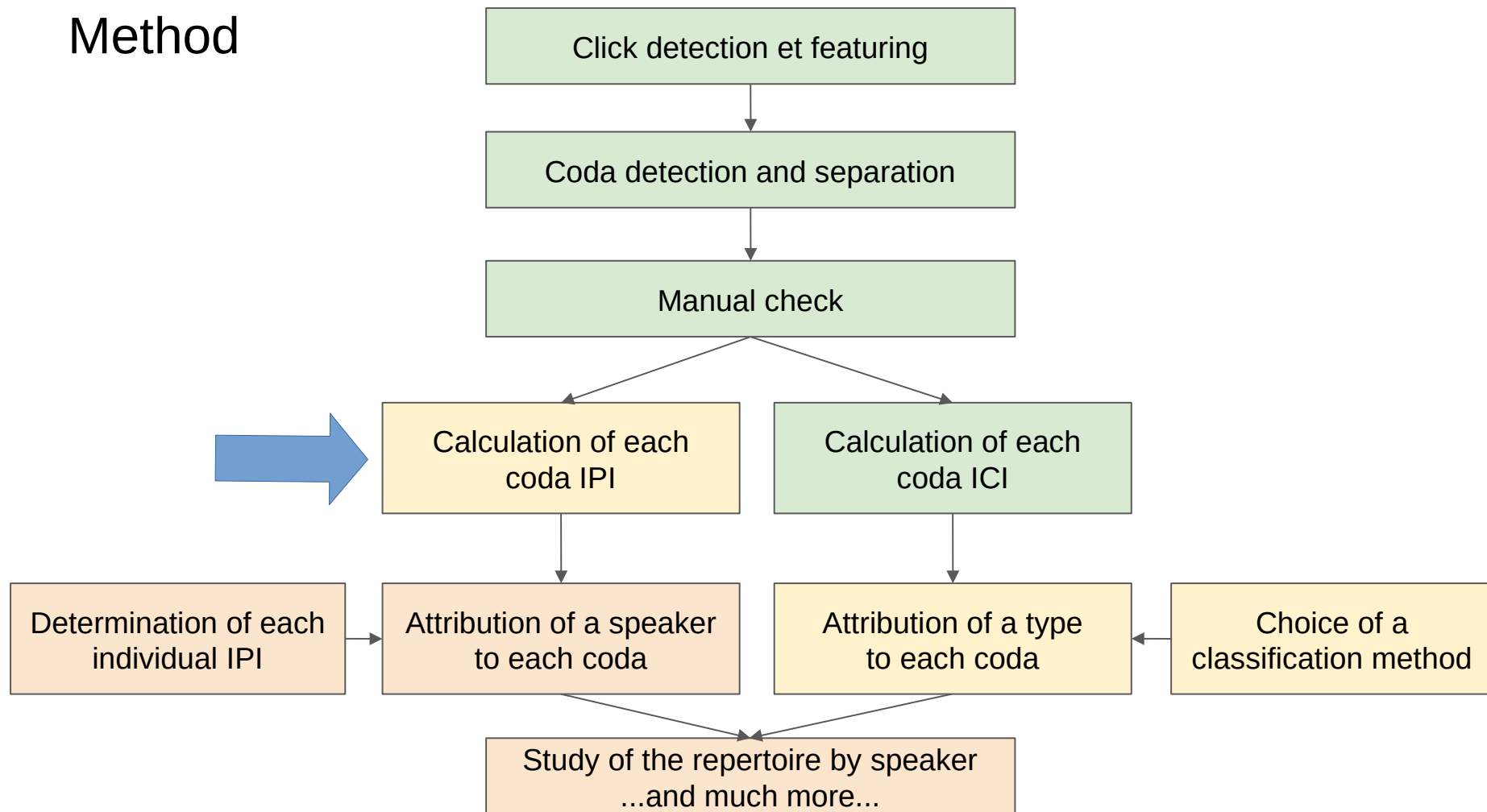
Choice of a coda classification method

- an example of file analysis with k-Means clustering

Étude des PCL



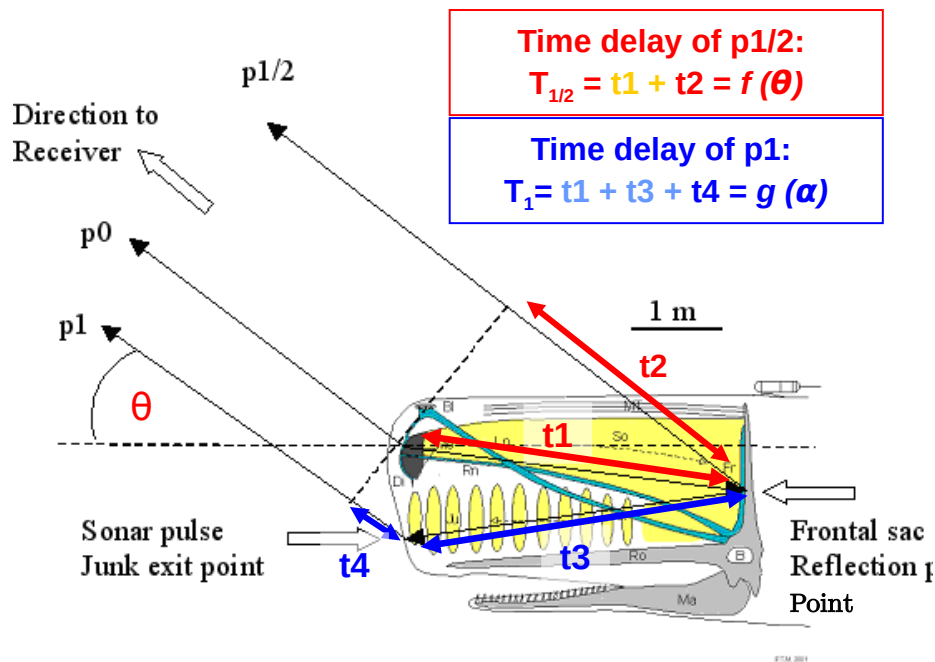
Method



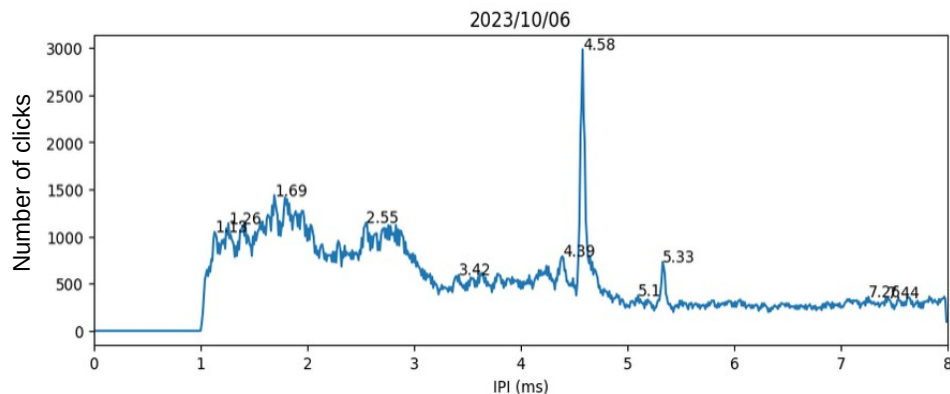
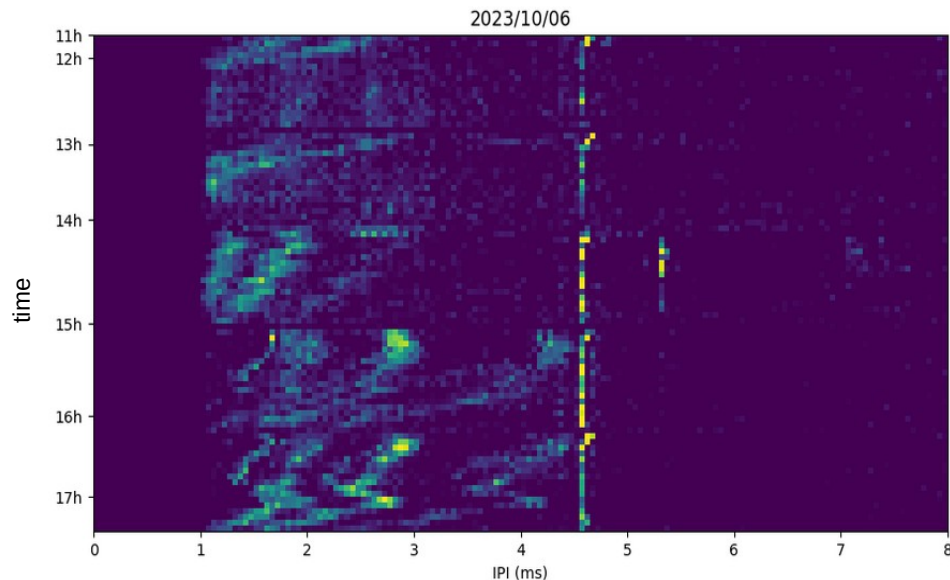
Calculation of a coda IPI

Calculation of IPI requires a large amount of clicks

The “Leaky” Bent-Horn Model

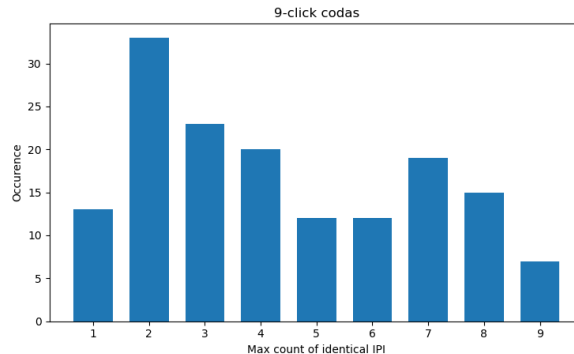
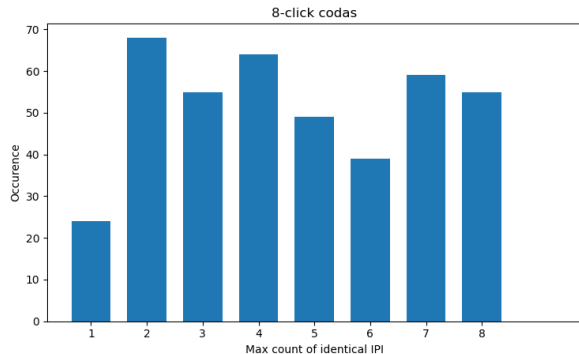
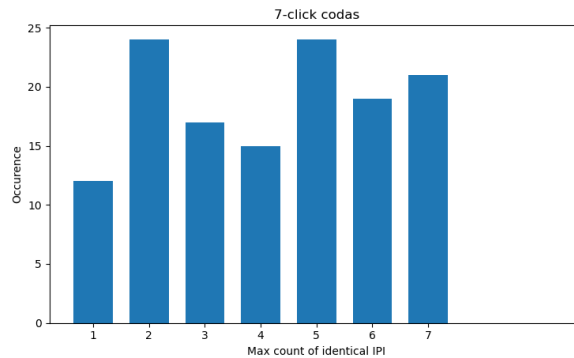
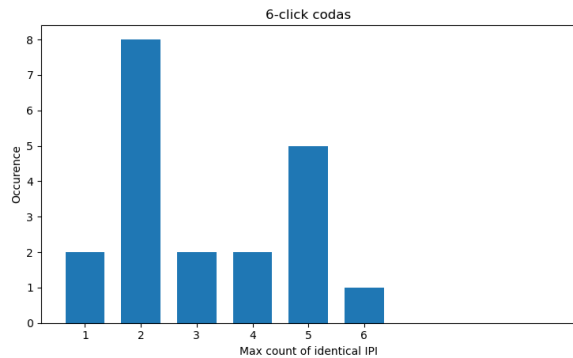


Zimmer, Madsen, Teloni & Tyack 2005, JASA 2005



Calculation of a coda IPI

- Number of click in a coda is too low for a robust IPI estimation

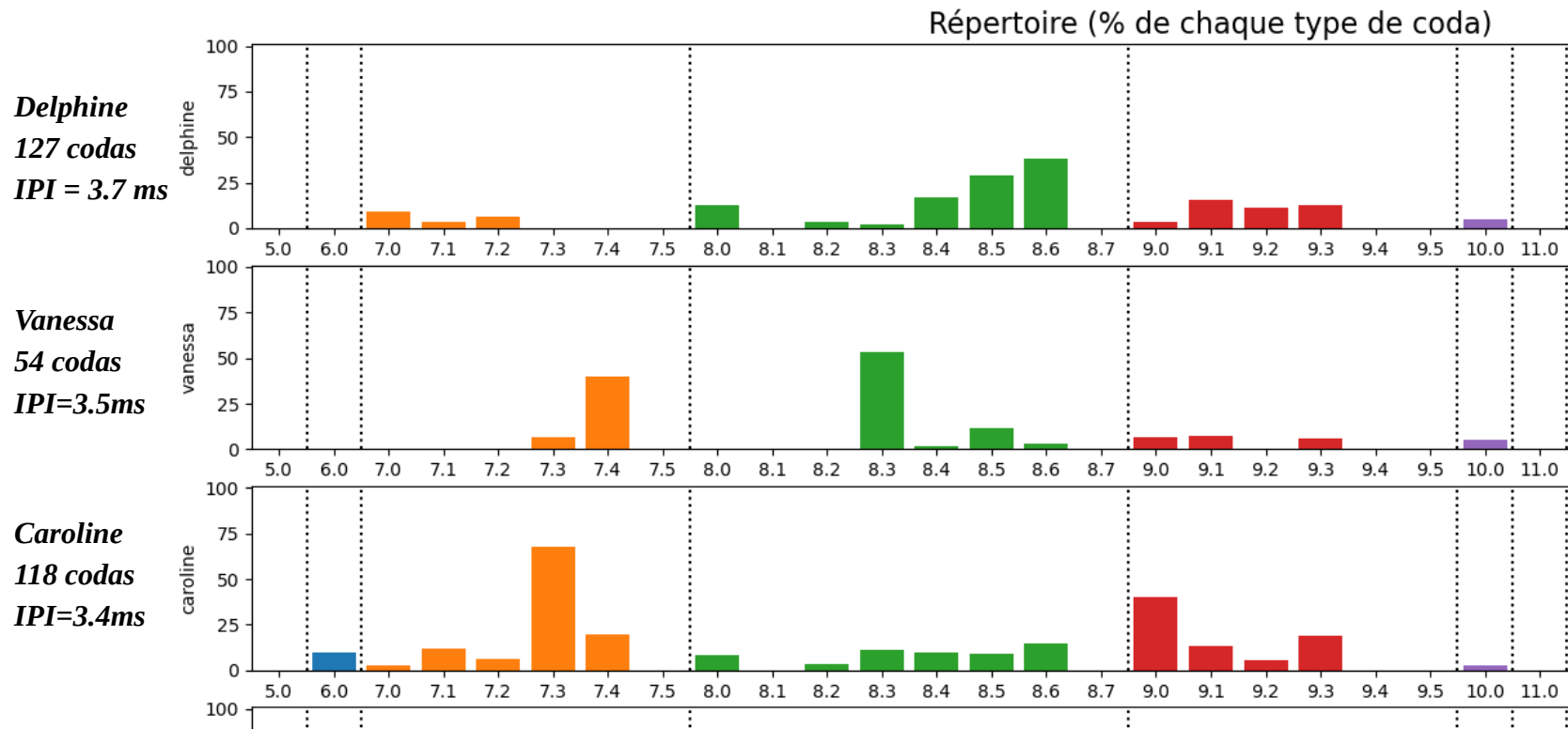


73 % of the codas have 3 or more clicks with the same IPI
→ speaker identification

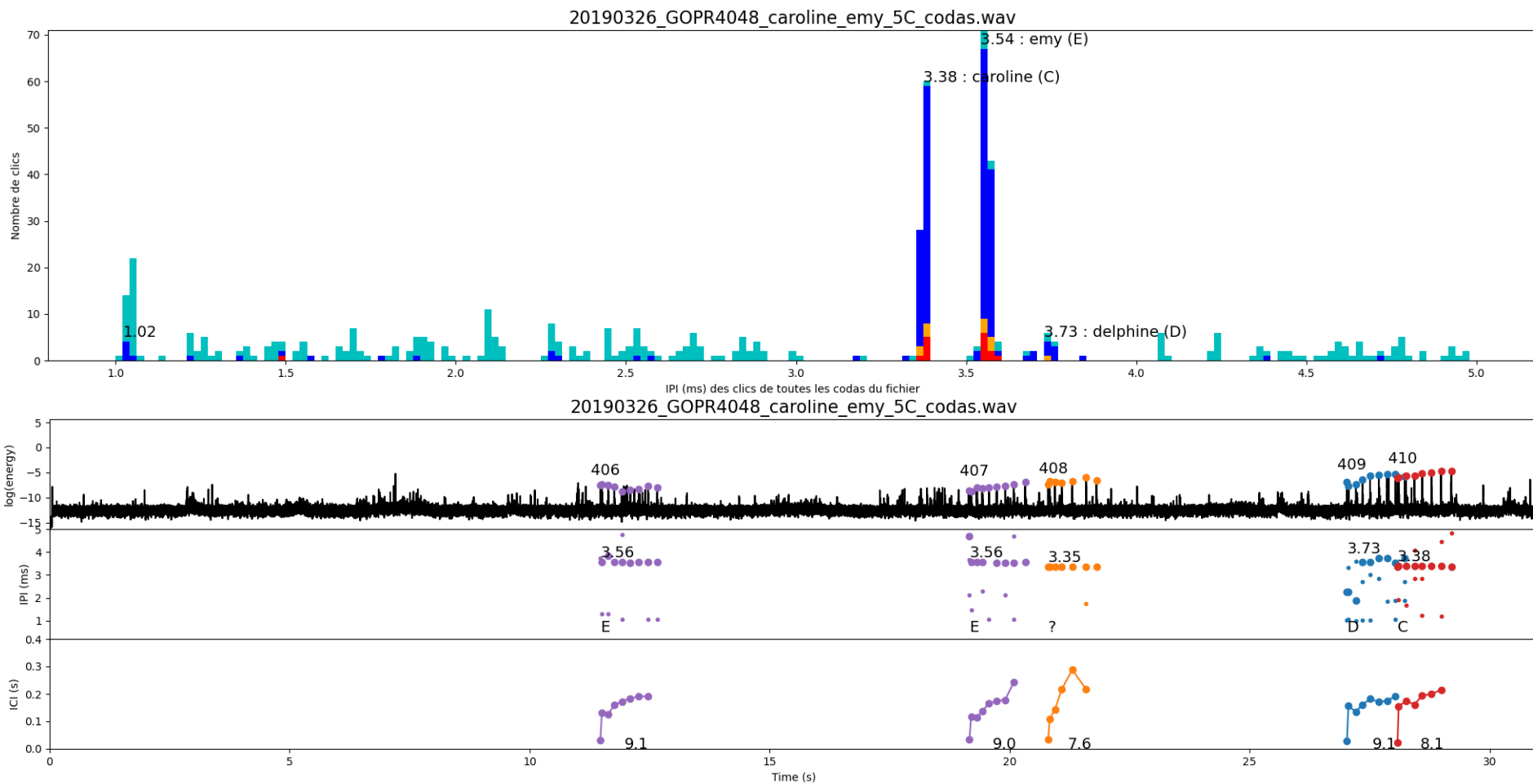
27 % of the codas have less than 3 clicks with the same IPI → no speaker identification

Preliminary results on individual repertoires

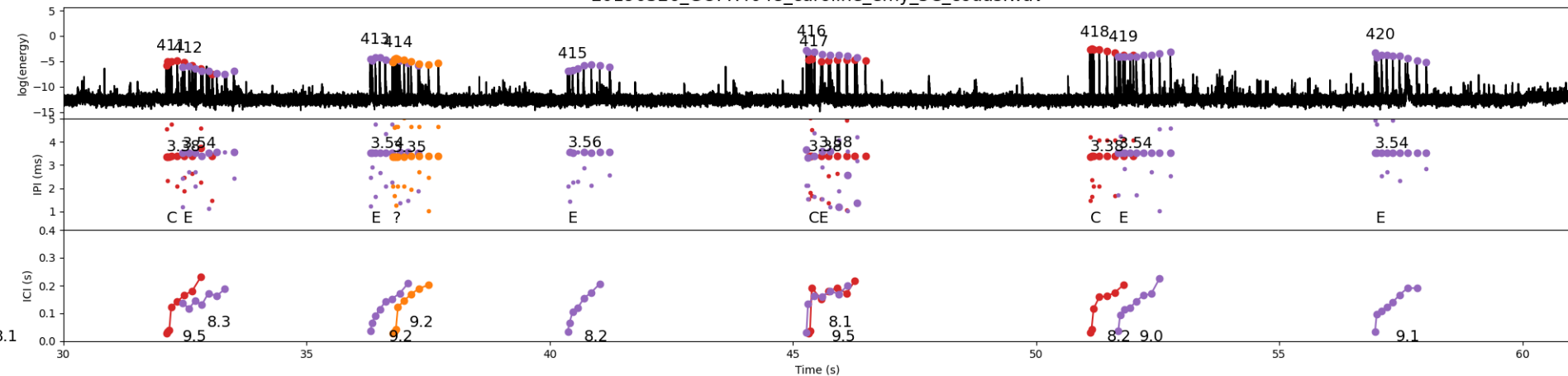
- 3 individuals selected for stable and different IPI: Delphine, Vanessa, Caroline



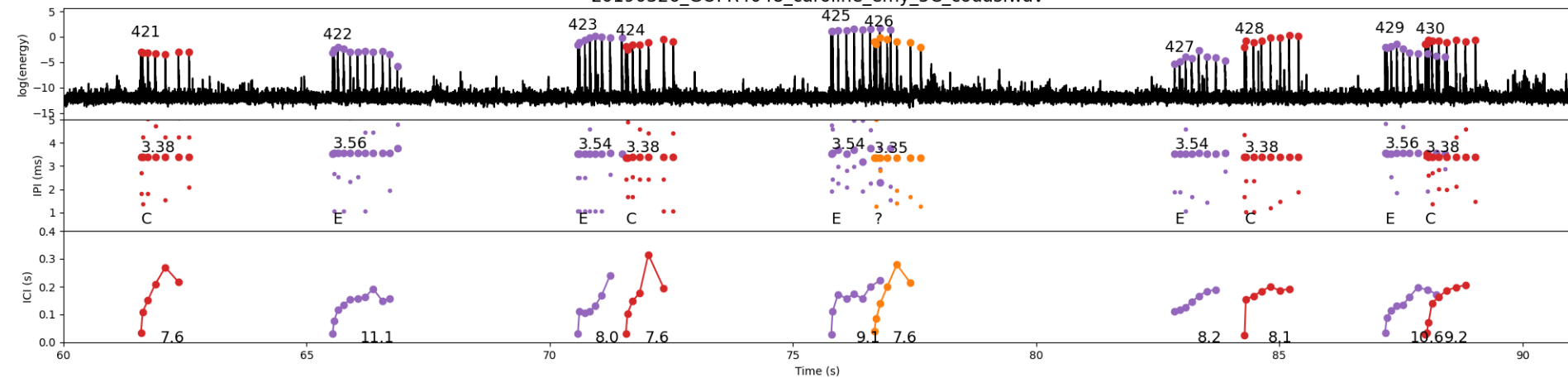
Preliminary results on dialogues



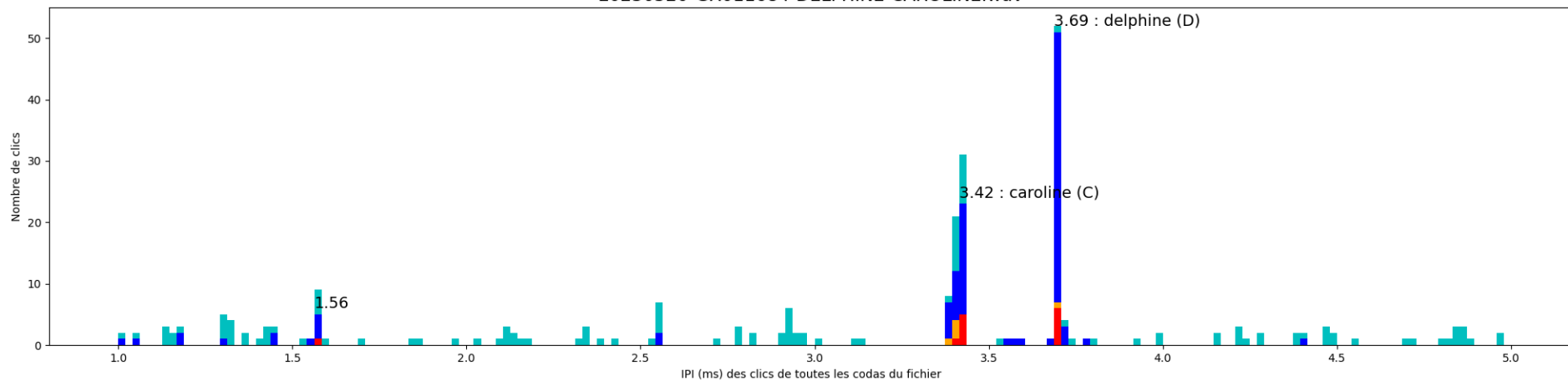
20190326_GOPR4048_caroline_emy_5C_codas.wav



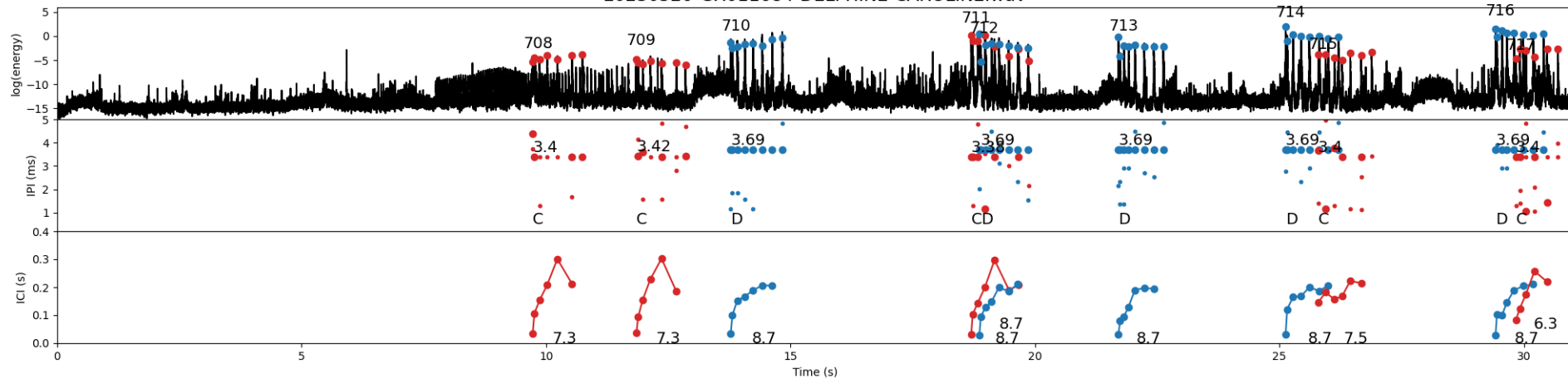
20190326_GOPR4048_caroline_emy_5C_codas.wav



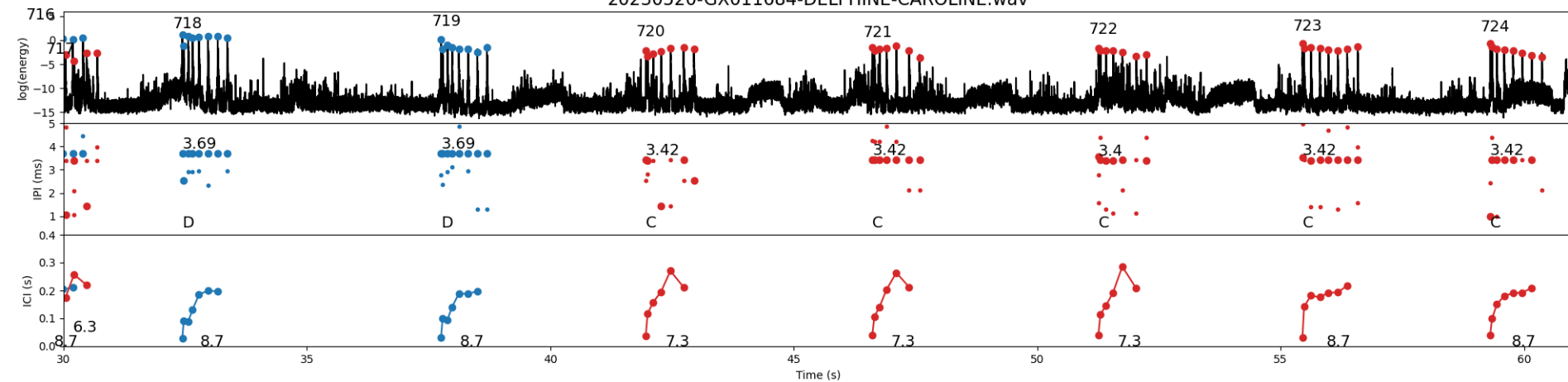
20230520-GX011684-DELPHINE-CAROLINE.wav



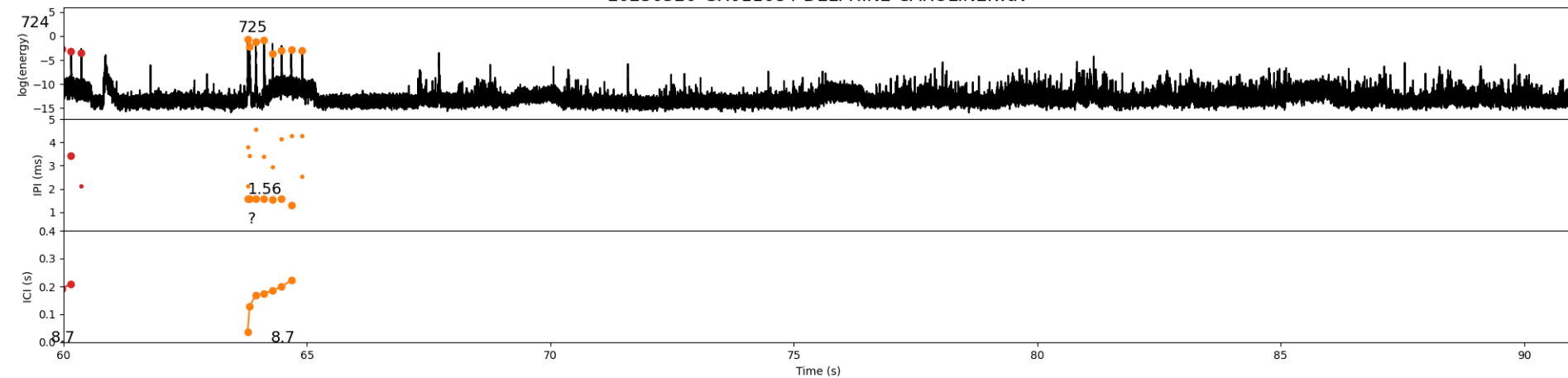
20230520-GX011684-DELPHINE-CAROLINE.wav



20230520-GX011684-DELPHINE-CAROLINE.wav

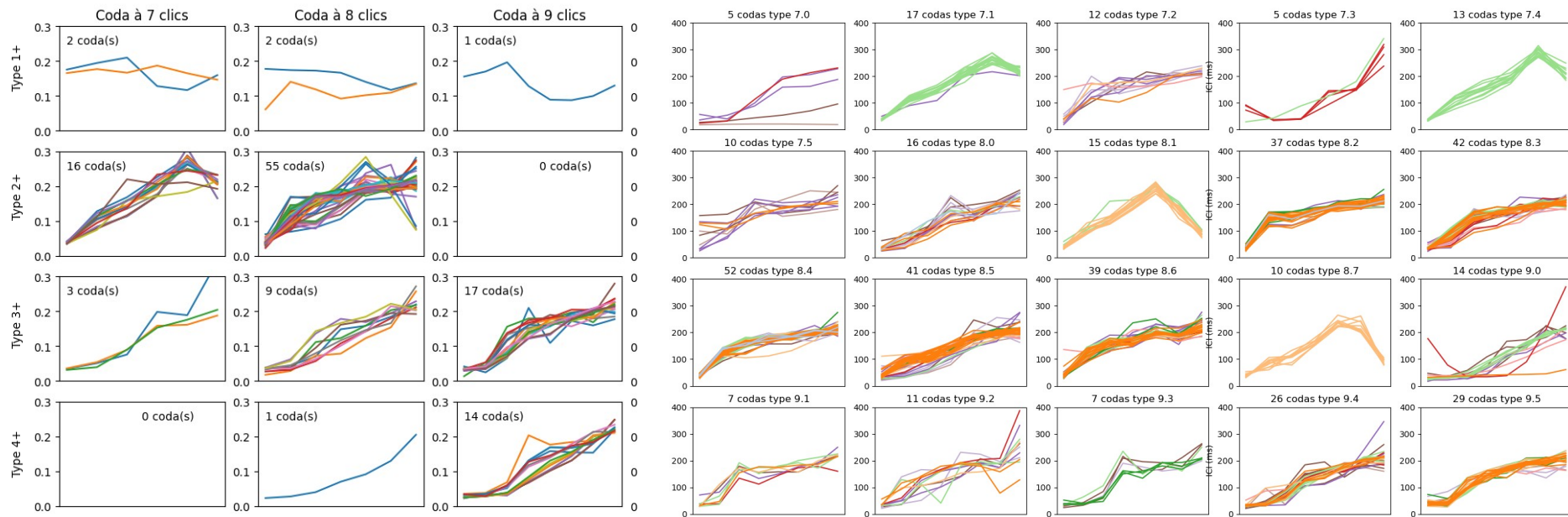


20230520-GX011684-DELPHINE-CAROLINE.wav



Perspectives

- Towards an explicit coda classification ?



Perspectives

- Improve the 73 % coda IPI detection or
- Use other clues to identify the speaker → TDOA (Walter Zimmer ; Lara Berkenbaum (PhD))

